

PLAN

SECTION

TYPE "C" INLET

RECOMMENDED MAXIMUM PIPE SIZE
2'-0" WALL-18" PIPE
3'-1" WALL-24" PIPE

| ENGINEERING STANDARDS 2025 | | | | |
|----------------------------|-------|---|------------------------------------|--|
| REVISIONS | | ENGINEERING DIVISION CITY OF POMPANO BEACH | TYPE "C" INLET | |
| BY | DATE | | | |
| S.S. | 09-11 | | | |
| | | | | |
| | | | | |
| | | SCALE: N.T.S. | DATE: JUNE 2022 DWG. NO. 400-1B | |

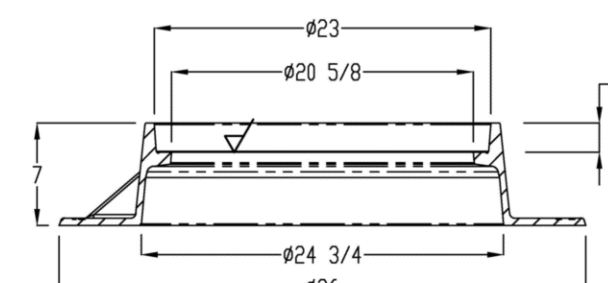
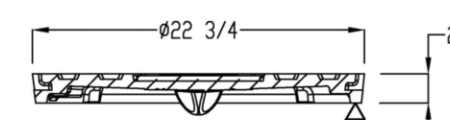
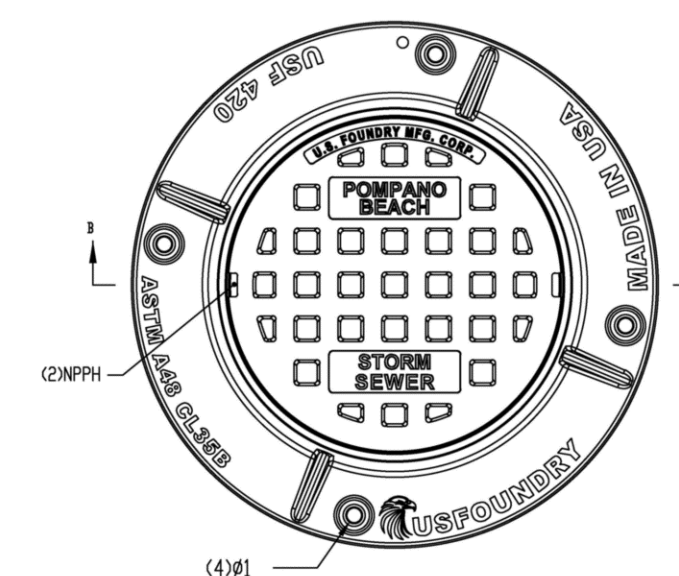
PLAN

SECTION

TYPE "D" INLET

RECOMMENDED MAXIMUM PIPE SIZE
3'-1" WALL-24" PIPE
4'-1" WALL-36" PIPE

| ENGINEERING STANDARDS 2025 | | | |
|----------------------------|-------|---|-----------------------------------|
| REVISIONS | | ENGINEERING DIVISION CITY OF POMPANO BEACH | TYPE 'D' INLET |
| BY | DATE | | |
| S.S. | 09-11 | | |
| | | | |
| | | SCALE: N.T.S. | DATE: JUNE 2022 DWG. NO. 401-1 |



ENGINEERING STANDARDS 2025

| | | | | |
|---------------|-------|---|----------------------------------|----------------------------------|
| REVISONS | | ENGINEERING DIVISION CITY OF POMPANO BEACH | COVER FOR MANHOLES AND INLETS | DATE: DEC 2022 DWG. NO. 409-1 |
| BY | DATE | | | |
| A.S. | 12/22 | | | |
| | | | | |
| | | | | |
| SCALE: N.T.S. | | | | |

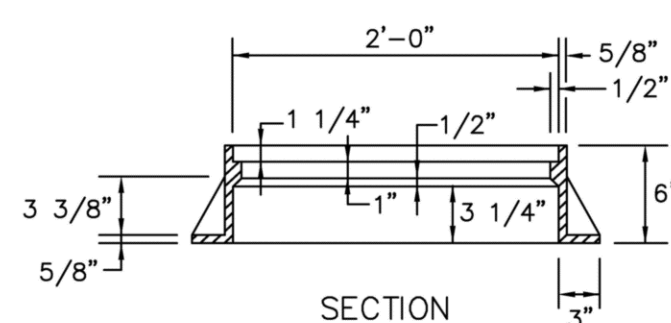
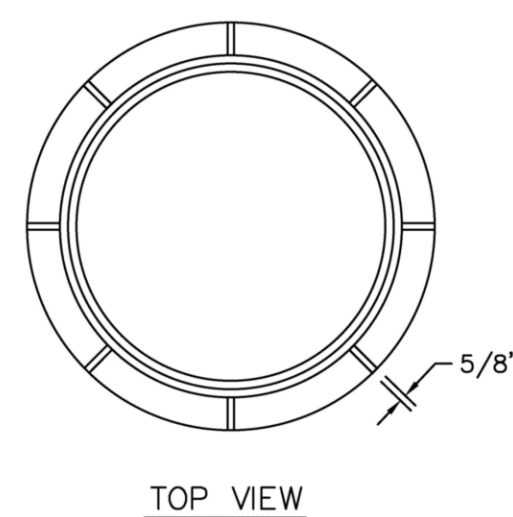
TYPE H

TYPE E

TYPE C

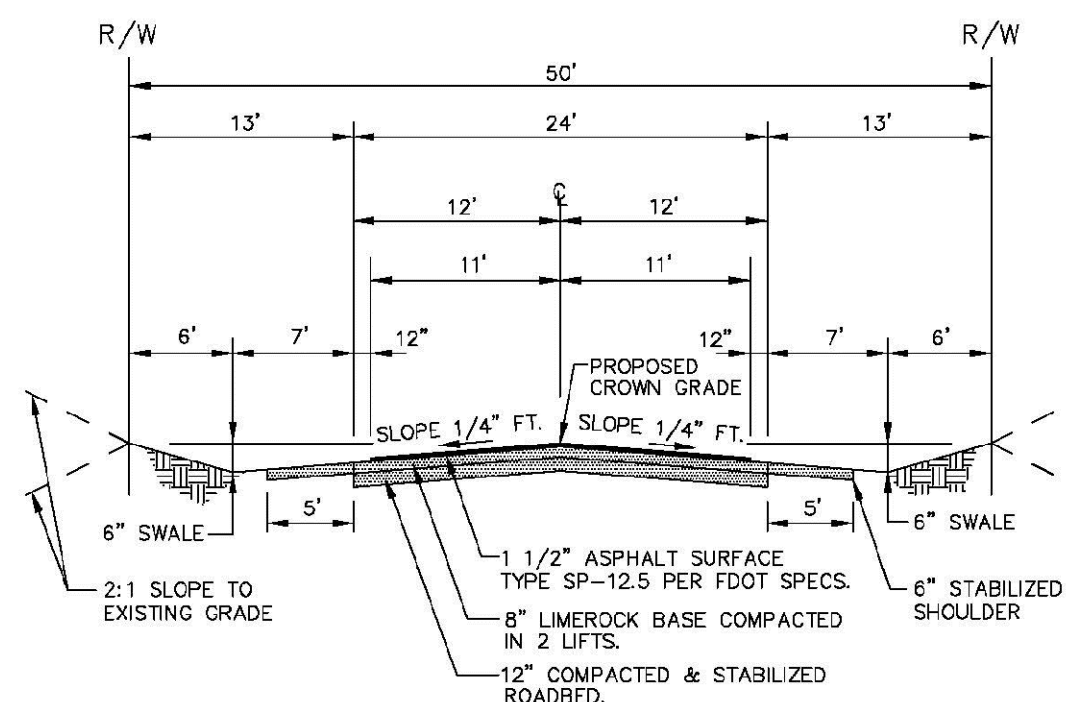
CAST IRON GRATES

| | | | |
|----------------------------|------|---|------------------|
| ENGINEERING STANDARDS 2025 | | | |
| REVISIONS | | ENGINEERING DIVISION CITY OF POMPANO BEACH | CAST IRON GRATES |
| BY | DATE | | |
| | | | |
| | | | |
| | | | |
| | | | |
| SCALE: N.T.S. | | DATE: JUNE 2022 DWG. NO. | 410-1 |



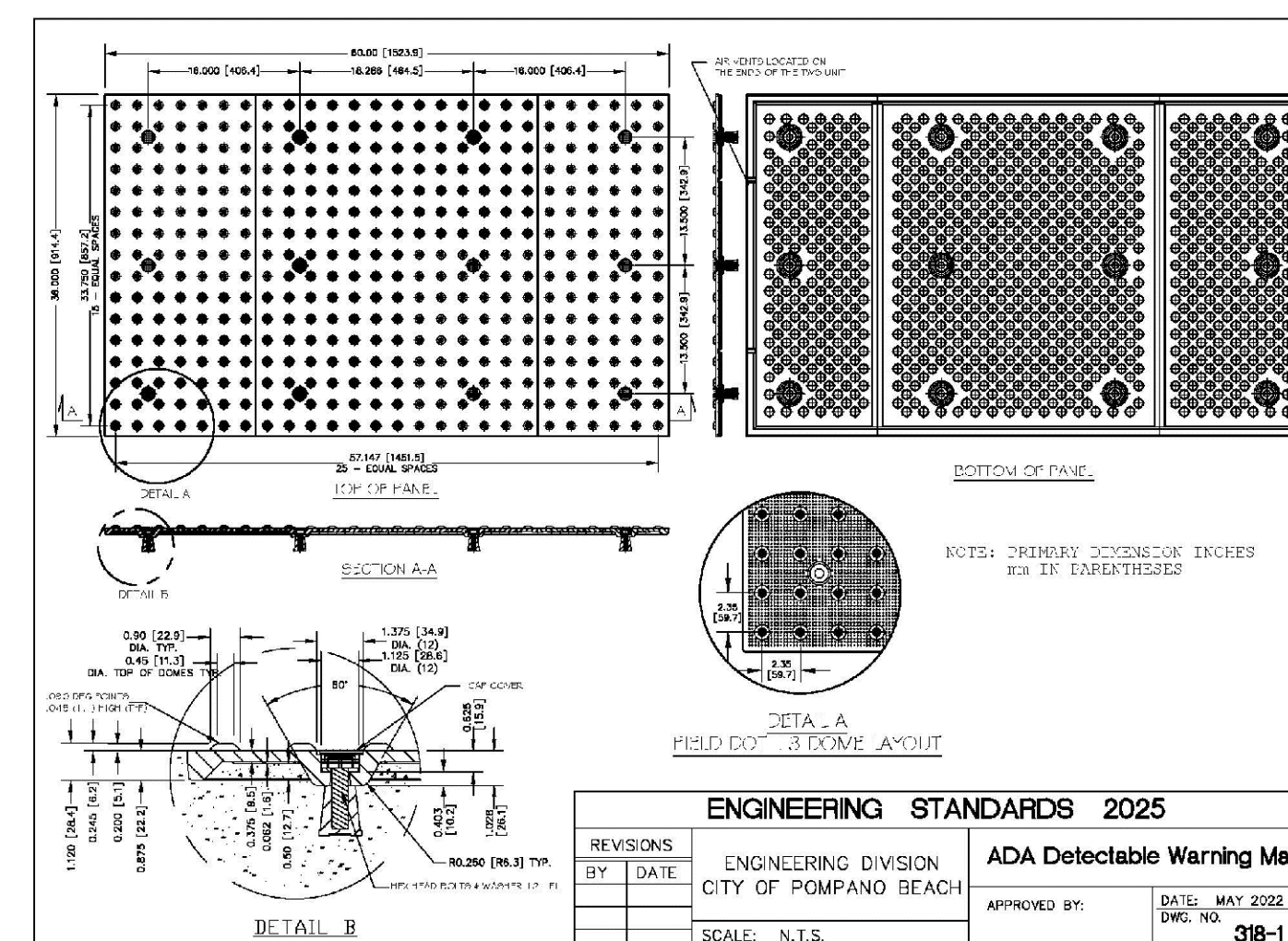
CAST IRON FRAME FOR MANHOLES

| | | | |
|----------------------------|------|---|---------------------------------|
| ENGINEERING STANDARDS 2025 | | | |
| REVISIONS | | ENGINEERING DIVISION CITY OF POMPAÑO BEACH | CAST IRON FRAME FOR MANHOLES |
| BY | DATE | | |
| | | | |
| | | | |
| | | | |
| SCALE: N.T.S. | | DATE: JUNE 2022 | DWG. NO. |
| | | 411-1 | |

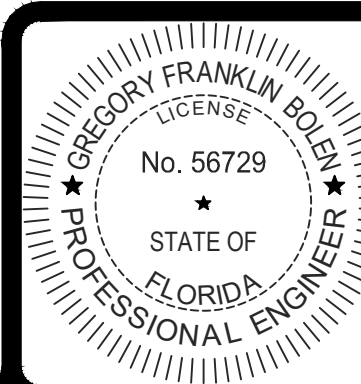


TYPICAL ROADWAY SECTION

| | | | |
|----------------------------|-----------|---|----------------------------------|
| ENGINEERING STANDARDS 2025 | | | |
| REVISIONS | | ENGINEERING DIVISION CITY OF POMPANO BEACH | TYPICAL ROADWAY SECTION |
| BY | DATE | | |
| S.S. | JUNE 2005 | | |
| S.S. | JAN. 2018 | | |
| SCALE: N.T.S. | | | |
| | | | DATE: MAY 2022 DWC. NO. 305-1 |



| | | | |
|----------------------------|------|---|----------------------------------|
| ENGINEERING STANDARDS 2025 | | | |
| REVISIONS | | ENGINEERING DIVISION CITY OF POMPAÑO BEACH | ADA Detectable Warning Mats |
| BY | DATE | | |
| | | | |
| | | | |
| SCALE: N.T.S. | | APPROVED BY: | DATE: MAY 2022 DWG. NO. 318-1 |



GREGORY FRANKLIN BOLEN, P.E., STATE OF FLORIDA,
PROFESSIONAL ENGINEER, LICENSE NO. 56729

THIS ITEM HAS BEEN ELECTRONICALLY SIGNED AND
SEALED BY GREGORY FRANKLIN BOLEN, P.E. ON
6/30/2025 USING A SHA-1 AUTHENTICATION CODE.

PRINTED COPIES OF THIS DOCUMENT ARE NOT
CONSIDERED SIGNED AND SEALED AND THE SHA-1
AUTHENTICATION CODE MUST BE VERIFIED ON ANY
ELECTRONIC COPIES.

REVISIONS



| | | | | |
|----------------|---------------|---------|----------|------|
| DESIGN C.M. | DRAWN B.L. | CHECKED | APPROVED | DATE |
|----------------|---------------|---------|----------|------|

HODGE MARINE
SECTION 27, TOWNSHIP 48S., RANGE 42E.
CITY OF FORT LAUDERDALE BEACH, FLORIDA
CONCEPTUAL
PAVING AND DRAINAGE DETAILS

| | | | |
|-------------------|-----------------------------|--------------|------------|
| JOB NO. 25-093 | DRAWING NO. PZ25-1208002 | SHEET C-6 | OF C-15 |
|-------------------|-----------------------------|--------------|------------|

08/06/2025